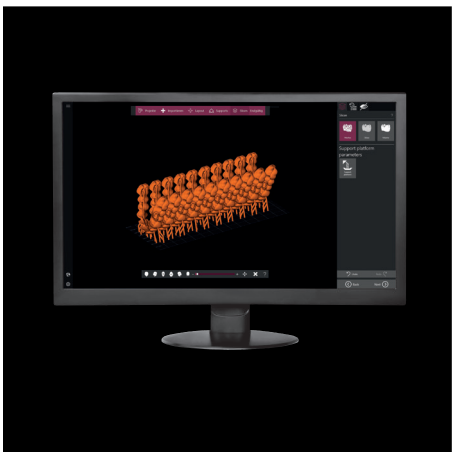
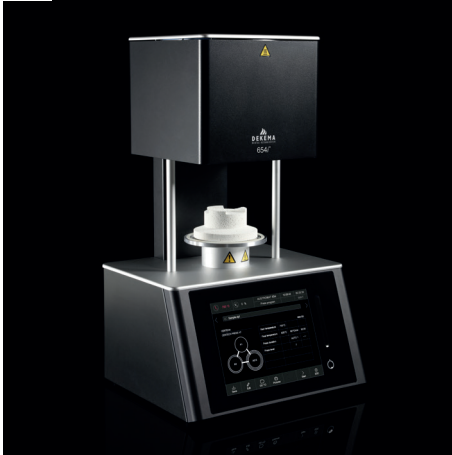




DEKEMA

trix™



trix™

DEKEMA. Content.

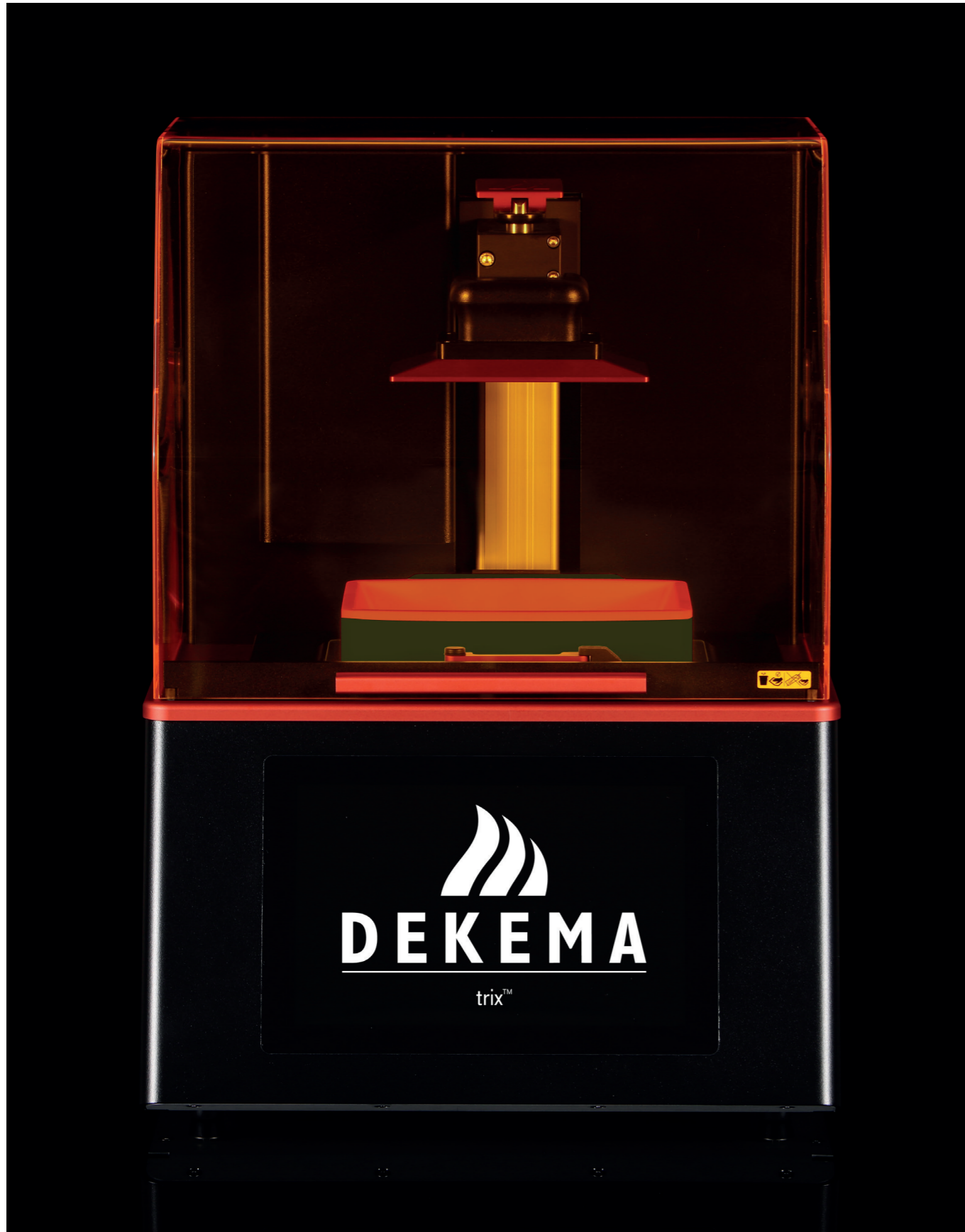
DEKEMA trix™print²	4
DEKEMA trix™CAD / trix™CAM	10
DEKEMA trix™press	18
DEKEMA trix™ Accessories	22
DEKEMA trix™ Technical data	26



trix

TM

print²



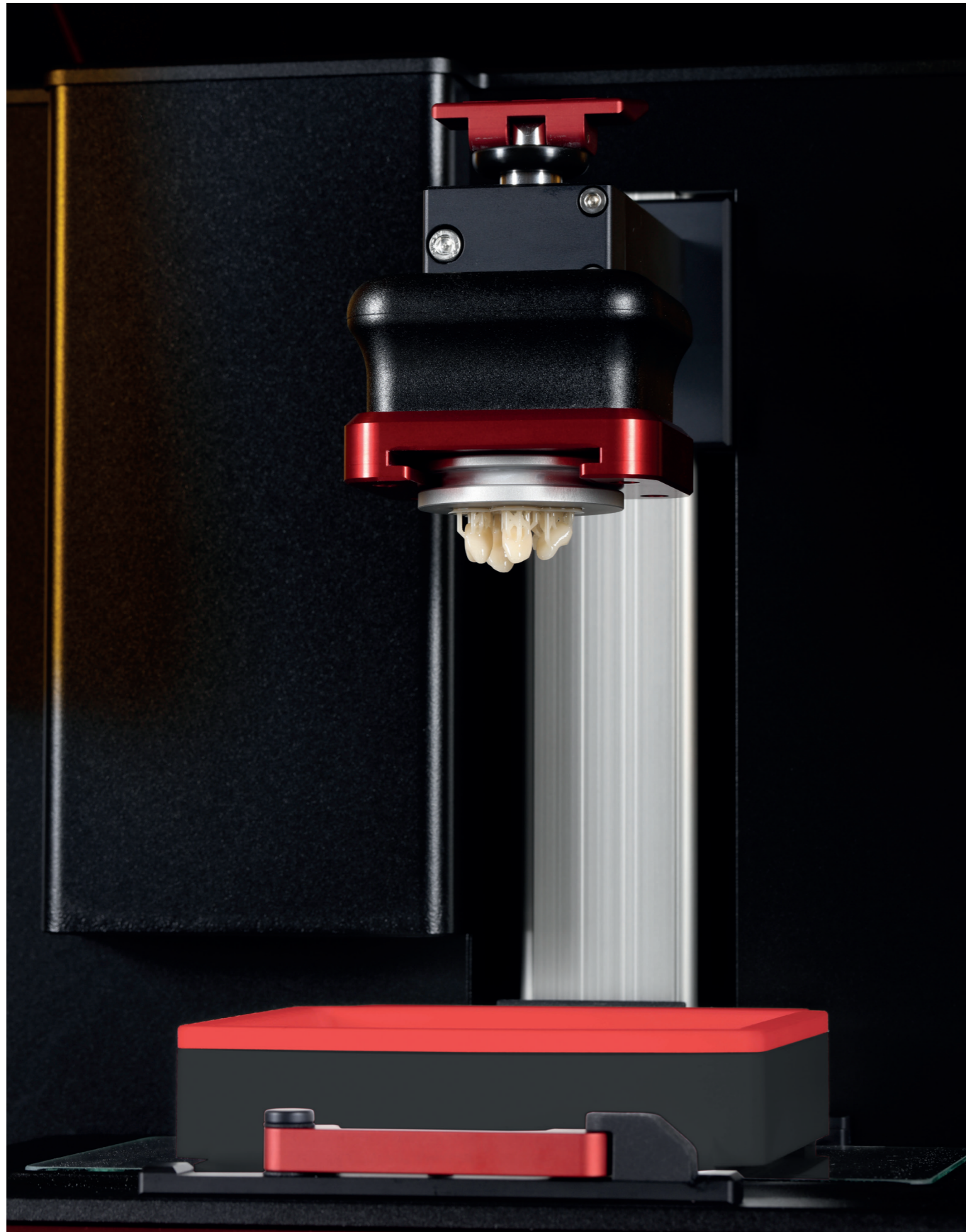
**With precision and efficiency
into the digital future.**

DEKEMA trix™ print².

trix™ print² 3D printer

With the trix™ print², you can produce fast and reliably reproducible dentures, such as crowns, bridges, veneers, partial dentures, frameworks, bite splints, as well as precise working models and drilling templates.

- » 10,1" multi-touch screen with comprehensive user interface
- » Automated transfer of project specific printing tasks
- » 3D print on top of up to two trixpress™ base plates, or a surface area of 144 x 80 mm with up to 160 mm height
- » Elegant black aluminium housing



Highest level precision

The DLP projector inside the trix™print² stands for the highest quality standard. By assembling the finest materials inside our factory, we supply consistent prints with razor sharp details and a long operating time.

Web 4.0 connectivity

Via the Web 4.0 connection, you always have the print status of the trix™print² in view, and can also control and monitor it remotely, wherever you are.

The print performance is constantly monitored by the trix™print² and you get a message when printing is finished.

The user-friendly software and easy material selection through the DEKEMA database provides even more efficiency and freedom for your daily work.

trix

TM

CAD/CAM

trix™CAD: Worldwide unique – reliable and reproducible.



trix™CAD

Automatic generation of the press buildup.



trix™print²

Direct printing on the trixpress™ base plate.



Ready!

Best DEKEMA result through a perfectly coordinated workflow.



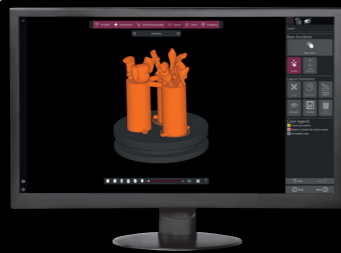
Web 4.0 connectivity

The DEKEMA Circle bidirectionally connects all applications and devices.



trix™press

Pressing the ring inside the AUSTROMAT™ 654i™



trix™CAM: User experience² – developed with passion for experts.



trix™CAM

Automatic nesting
of the print objects
on the build platform.



trix™print²

Printing of the solid construction
from the liquid resin.



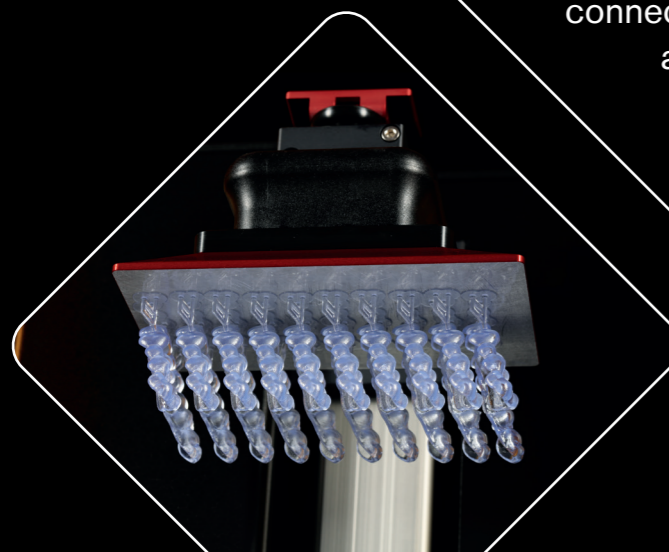
Web 4.0 connectivity

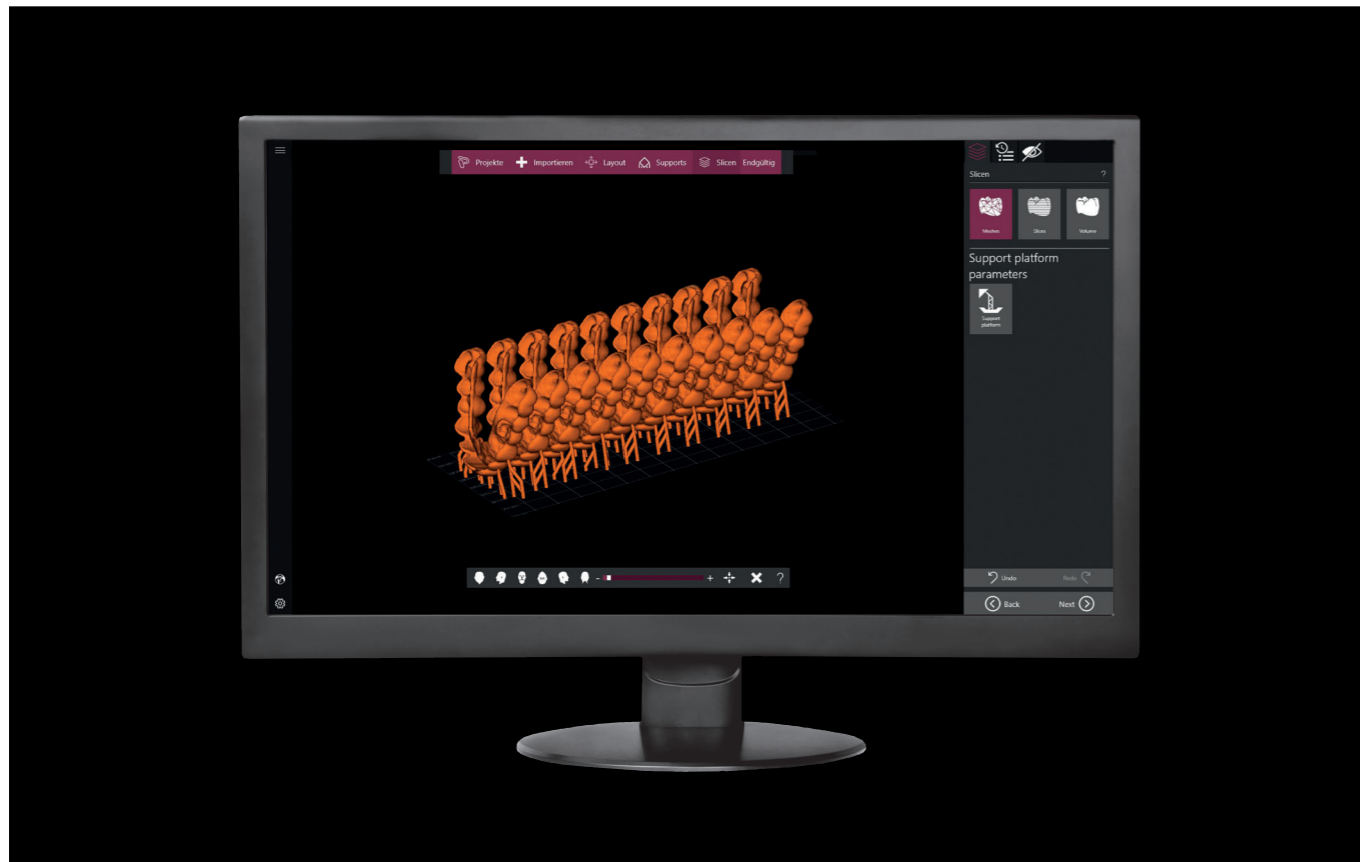
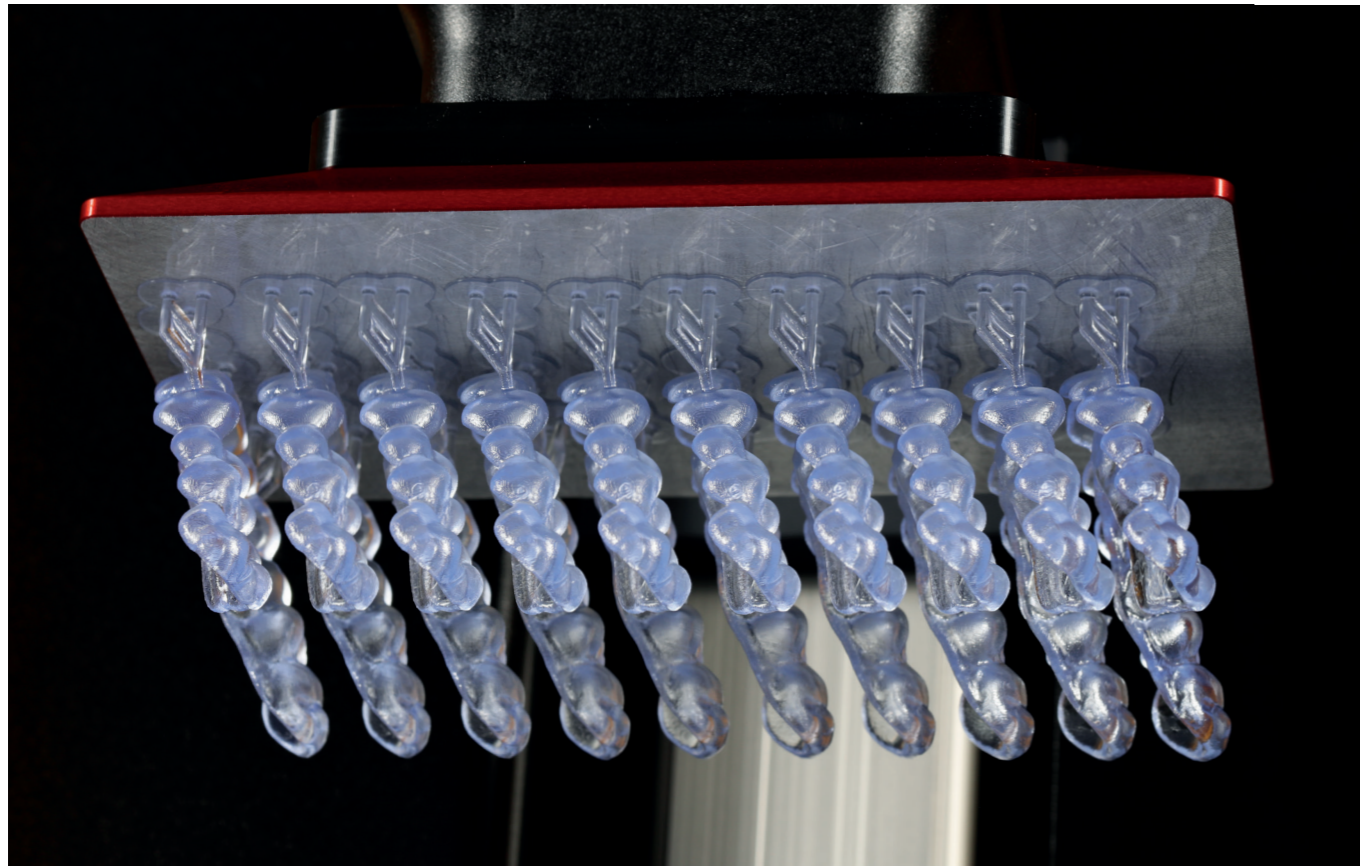
The DEKEMA Circle bidirectionally
connects all applications
and devices.



Ready!

Best DEKEMA result
through a perfectly
coordinated workflow.





**Digital Process Management
for the best results
and the highest efficiency.**

DEKEMA trix™ Software.

trix™CAD – The digital printing and pressing process

- » Selection and assignment of CAD press objects
- » Automatic setup generation
- » Slicing and data transfer to trix™print via DEKEMA Circle

trix™CAM – Preparation of the printing process for dentures

- » Selection of print objects of all common formats
- » Automatic nesting (positioning of objects on the platform)
- » Slicing and data transfer to trix™print via DEKEMA Circle

trix

TM

press



DEKEMA. Innovation in design and technology.

AUSTRUMAT™ 654i™.

Firing and pressing in perfection

- » Pressing, firing and glazing with or without vacuum
- » Crystallizing and infiltrating with or without vacuum
- » Even heat distribution through closed chamber design
- » Automatic control of the drying and cooling to optimize aesthetics
- » Multiple Press Time Automatic for optimal pressing results
- » Besides all common ring systems, press up to 20 g with the exclusive DEKEMA trixpress™
- » Press up to 3 different shades in one go, optimizing throughput
- » Even heat distribution over all surfaces of the investment ring which provides for exceptional aesthetics
- » Best-in-class user interface with remote operation
- » Cloud/IoT functionality through DEKEMA Circle
- » DEKEMA Autodry™
- » In elegant black and silver aluminium housing

DEKEMA Circle

All your DEKEMA equipment is connected via the DEKEMA Circle. You benefit from software updates and backups via Internet, an Internet data base connection, network remote control and the automatic transfer of project specific firing and pressing programs.

DEKEMA IoT (Internet of Things)

If your DEKEMA furnace is registered in the DEKEMA online portal, you benefit from a secure backup of process data and a fast service to minimize downtime.

DEKEMA online

By registering for the DEKEMA online service at www.dekema.com, you get access to thousands of firing, pressing and sintering programs.

trix

TM
Accessories

For the perfect big result.

DEKEMA trix™ Sets

DEKEMA trix™ print & place

- 🔥 tool set
- 🔥 gloves
- 🔥 large resin tank
- 🔥 fundament holder
- 🔥 network cable



DEKEMA trix™ print & smile

- 🔥 small resin tank
- 🔥 trix™press base holder for one plate
- 🔥 trixpress™ aluminium base plate



DEKEMA trix™ print & press

- 🔥 small resin tank
- 🔥 trix™CAST
- 🔥 trixpress™ base holder for one plate
- 🔥 trixpress™ base holder for double plate
- 🔥 trixpress™ ring system



DEKEMA trix™ Accessories

- 🔥 trix™CAST: Cast resin for further processing in the burnout process
- 🔥 trixpress™ ring system: Flexible ring system with base plates for direct printing
- 🔥 trix™vest: Investment compound for flawless ceramic surfaces without reaction layer
- 🔥 trixpress™ Plunger: Disposable press plunger for best temperature adaptations and a stable pressing process

The right hardware for every software.

Software license	trix™CAM Printing	trix™CAD Printing and pressing
trix™print	🔥	🔥
trix™ print & place	// Scope of delivery //	
trix™ print & smile	🔥	🔥
trix™ print & press	🔥	🔥
trix™CAST	🔥	🔥
trix™ resins	🔥	🔥
trixpress™ ring system		🔥
trix™vest		🔥
trixpress™ Plunger		🔥
AUSTROMAT™ 654i™		🔥

🔥 required 🔥 optional



trix

TM

**Technical
data**



Technical data.

AUSTROMAT™ 6547™

» Dimensions	653 x 383 x 343 mm (W x H x D)
» Weight	24 kg / 53 lbs
» Maximum firing temperature	1.200 °C
» Maximum power consumption	1.500 W
» Power supply	95 – 105 V/50–60 Hz or 110 – 125 V/50–60 Hz or 220 – 240 V/50–60 Hz

Recommended PC requirements for using the trix™CAD and trix™CAM software

» CPU	Intel® Core™ i7-2600
» RAM	6 GB
» Graphic card	Nvidia GTX 560 with 2 GB video RAM
» Screen resolution	1920 x 1080 pixel or higher
» Operating system	Microsoft Windows 10 and later

DEKEMA trix™print² 3D printer

» Dimensions	400 x 540 x 360 mm (W x H x D)
» Size of installation space	144 x 80 x 160 mm (X x Y x Z)
» Weight	18 kg / 40 lbs
» Power supply	100 – 240 V/50–60 Hz
» Z precision	> 1 µm
» Light source	385 nm
» Printing speed	70 mm/h (depending on material)
» Layer thickness	> 10 µm (depending on material)



Evaluated materials for the trix™ print².



A detailed listing of all evaluated materials
can be found at www.dekema.com/service



DEKEMA Dental-Keramiköfen GmbH
Industriestraße 22 • 83395 Freilassing • Germany
☎ +49-8654-46390 📧 +49-8654-66195
info@dekema.com • www.dekema.com

